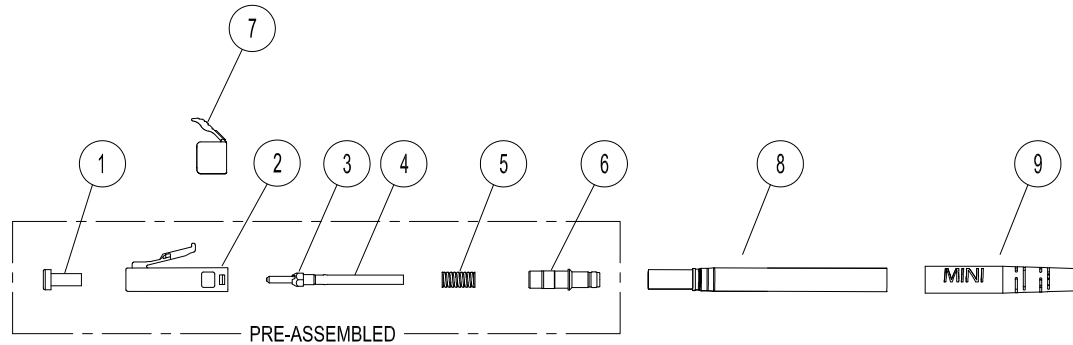
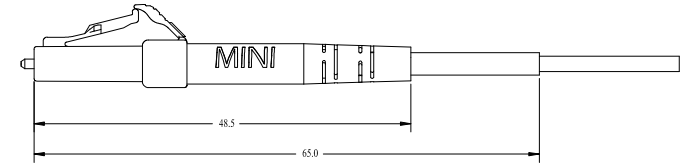
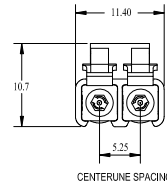
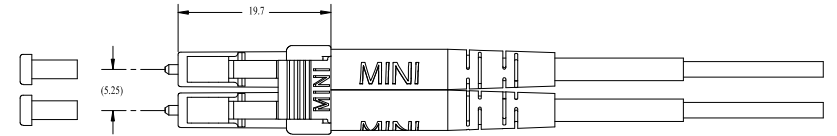
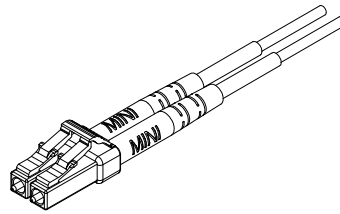


I Part List					
Item	Description	Qty	Material	Note	Flame Retardant
①	Dust Cap	2	PP	Color: White	N/A
②	LC Unibody Housing	2	PPSU	Color: Beige	UL94 V-0
③	LC Ferrule Assembly	2	Zirconia+SUS	Ferrule Color: White	N/A
④	Epoxy tube	2	PTFE	L:17mm	UL94 V-0
⑤	Spring	2	SUS	N/A	N/A
⑥	Strength Member	2	Aluminum	N/A	N/A
⑦	Duplex Yoke	1	Nylon	Color: Black	UL94 V-0
⑧	HST Subassembly	2	Al+Polyolefin	L:21mm, Y & W	VW-1
⑨	Boot	2	TPV	Color: Black	UL94 V-0

II Performance		Parameter	Tolerance(mm)
Ferrule O.D.		Ø1.249 mm	+0.0005 -0.0005
Ferrule Hole Diameter	SM	Ø0.125 mm	+0.001 -0
	MM	Ø0.126 mm	+0.001 -0
Concentricity	SM	<1.0um	
	MM	1.0~3.0um	

Rev	Revised	Date
2.0	Wen.Liang	2019-6-3



	0.5-3	3-6	6-30	30-120	120-400	400-1000	1000--
○ F	±0.05	±0.05	±0.10	±0.15	±0.20	±0.30	±0.50
● M	±0.10	±0.10	±0.20	±0.30	±0.50	±0.80	±1.20
○ C	±0.20	±0.30	±0.50	±0.80	±1.20	±2.00	±3.00
○ V		±0.50	±1.00	±1.50	±2.50	±4.00	±6.00

Title	Mini LC Duplex Ø1.6 to 2.0mm Unibody Connector		Part Name	LC connector
Design	Wen.Liang	2019-6-3	Drawing No	20190603001
Check	Xuanmao.Wu	2019-6-3	Treatment	Parts
Approve	Xuanmao.Wu	2019-6-3	Material	See Parts List
Scale: 1:1			Unit:mm	P/N: N/A

